

**The global leader  
in innovative label  
and packaging  
solutions**





If you are looking for  
a vendor that you can  
count on, there is no one  
that we'd recommend  
more than ABC

Neil Sidrane, CEO  
K. Sidrane, Inc. USA



- 4 Engineering tomorrow's solutions
- 5 Powered by our people
- 8 One global family
- 10 Digital finishing
- 12 Digital finishing machines
- 14 Inspection Slitter rewinders
- 18 Camera inspection
- 19 Converting
- 20 RFID
- 21 Non stop winders
- 22 Turret rewinders
- 26 Shrink sleeve
- 30 A B Graphic values & service

# Engineering tomorrow's solutions today

With one eye firmly on the future,  
we aim to maintain our position as  
market leaders in innovation.

We will continue to strategically  
invest in new sectors, businesses  
and emerging areas of innovation,  
to ensure we continually create  
added- value for our clients.



# Powered by our people

A B Graphic International was established in Yorkshire by the Burton family back in 1954. We quickly established strong roots as an engineering operation; a foundation that still remains firmly in place today.

Fast forward and today we are the global leader in innovative label and packaging solutions.

Our ongoing expansion into new territories has been made possible by the passion and commitment of our global family of 450+ experts, delivering the very best, cutting-edge print finishing solutions for our clients across the globe.

We remain 100% family owned and our global team still maintains those same core values of decency, integrity and above and beyond service.



**Our electrical engineering team building a Digicon component.**



**We design, manufacture and build all A B Graphic machines at our manufacturing sites.**



**We invest in bespoke automated tooling.**



**Our machines are rigorously tested before the customer acceptance stage.**



**Our global team believe in innovation and excellence. This is echoed in our products.**

**One global family with  
a passion for customer  
driven innovation**

**Over 14,000m<sup>2</sup> of  
manufacturing facilities in  
the UK, Germany and Spain**

**Sales and service offices  
across the UK, Germany, USA,  
France, Holland and Spain**

**A worldwide network of over  
60 distribution partners**

-  Sales & manufacturing site
-  Distribution partners

# Digital finishing

Our market-leading digital finishing equipment is used every day, throughout the world, to produce labels and packaging of the very highest quality.

Printers choose our equipment because it is quick to set up, easy to use, fast, automated, flexible and reliable. They know that we are not prepared to cut corners, either on components or build quality. This means that A B Graphic digital finishing systems can be counted on to provide years of trouble-free service.



# Digicon Series 3

Digicon Series 3 systems are modular in design, so that they can be tailored to meet individual needs and create a clear, competitive advantage for any print business.

**Accurate**

Built with precision to ensure consistent results.

**Flexible**

With modules and options to give you a competitive edge.

**Fast**

Able to keep pace, inline, with the latest digital print engines.

**Simple**

Roll-to-roll or roll-to-sheet for any digital printing application.



Scan here to see more about the Digicon



# DigiLite

The Digicon Lite 3 is an entry level, compact digital finishing system built to the same exacting standards as the larger market leading Digicon Series 3.

**Cold foiling**

Produces a great foil finish with a standard flexo plate.

**Efficient**

DigiLite creates excellent results in a quick and easy way.

**Time saving**

Autoslit with label gap sensor saves time by automatically setting knives.

**Sheeter**

Enables you to finish sheets as well as web.



Scan here to see more about the DigiLite



# DigiJet

Opening up a new world of high-quality digital embellishment techniques, DigiJet allows for multiple processes in one pass, including spot varnishing, cold foiling and tactile screen.

**Flexible**

Can work with any graphic file in grayscale.

**Versatile**

Suitable for varnish and cold foil of various thicknesses.

**Multi-purpose**

Print solid varnishes and fine details on the same label.



Scan here to see more about the DigiJet



# DigiLase

The DigiLase 4.0 is an innovative digital finishing machine, with state-of-the-art laser cutting technology. Traditional die-cutting tools are not required, which saves capital investment, set-up time and waste.

**Precise**

Can produce intricate shapes, fine contours, sharp corners and through cutting, with pin-point accuracy.

**Creative**

No limits when it comes to creativity, with kiss cutting, engraving, through cutting and bit removal.

**Versatile**

Can produce labels on a wide range of materials.



Scan here to see more about the DigiLase

# Inspection slitler rewinders

Our inspection, slitler rewinders are used in finishing departments worldwide. Instead of relying on a third party camera system, they can be equipped with our own fleyeVision 100% inspection system. This ensures that everything works seamlessly together, with a single supplier for ongoing service and support.

With models to suit general, as well as specialist clinical and pharmaceutical applications, our range of slitler rewinders can be adapted to meet your needs exactly. Designed and manufactured to deliver outstanding performance, they are capable of boosting productivity and guaranteeing quality.



## Omega SRI

The Omega SRI is a powerful, efficient and versatile label finishing system, which offers three high-speed functions: slitting, rewinding and inspection.

### Bespoke build options

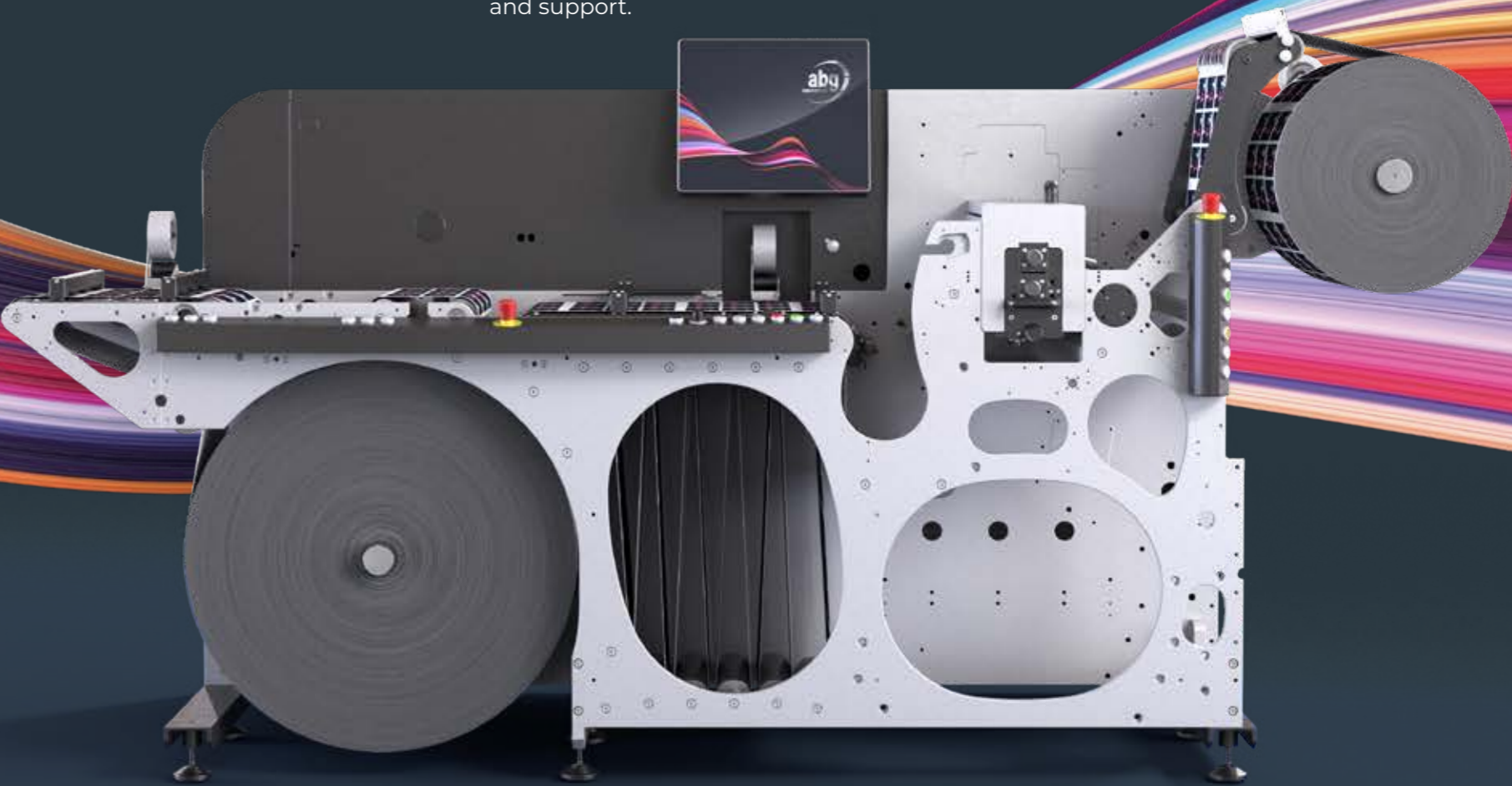
Modular system to allow future retrofits.

### High-speed

Can operate at up to 350 metres per minute.

### Seamless integration

Equipped with A B Graphics fleyeVision 100% camera inspection. Seamless integration and support.

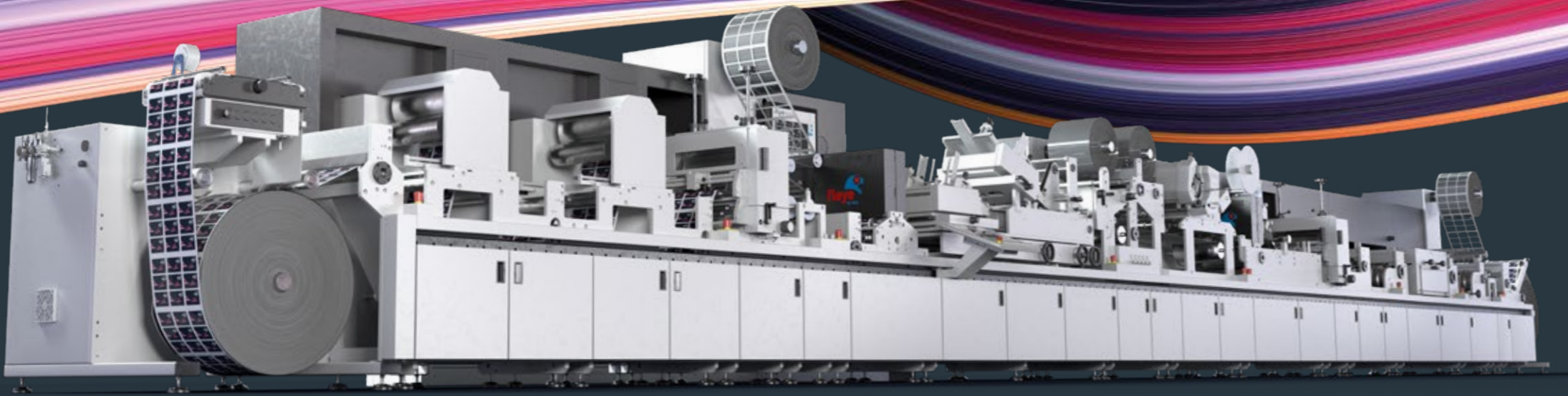


# Omega

Booklet Machine

Accurate, efficient booklet production — our Booklet Machine is a masterclass in versatility.

- Modular design**  
Fully modular design allows integration with a wide range of converting.
- High speed**  
Ability to process up to 36,000 booklet labels per hour.
- Quick and easy**  
Equipped with feeding system, which can be set up quickly and easily.

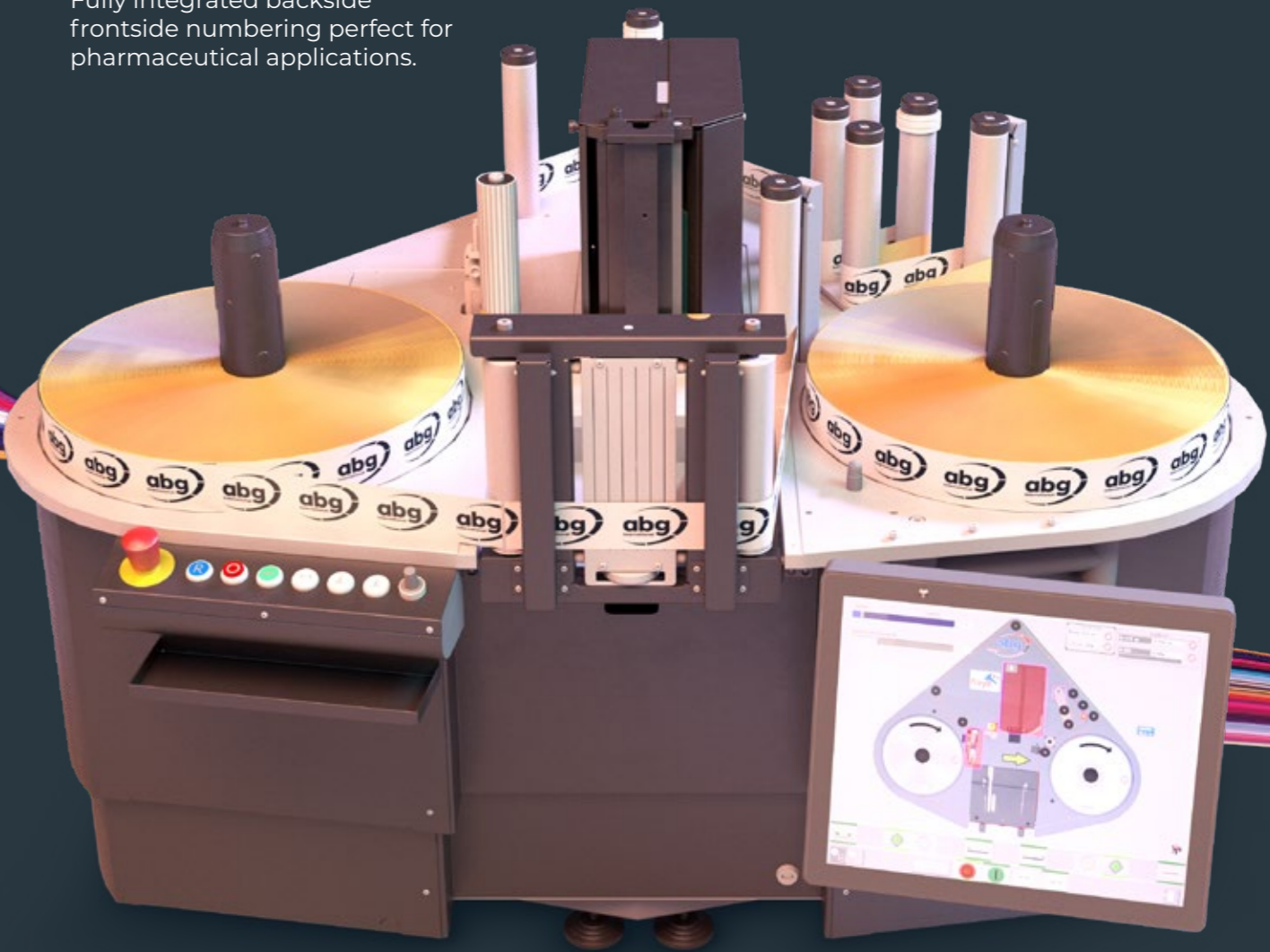


# Omega

Horizon

Designed to enable you to inspect and re-work single lanes, our Horizon can be upgraded with our very own fleyeVision 100% print inspection system.

- Versatile options**  
Multifunctional table top rewinding section.
- Easy to use**  
Simplistic toolless mandrel exchange.
- Precision finishing**  
Fully integrated backside frontside numbering perfect for pharmaceutical applications.



# Camera inspection

## fleyeVision

100% print inspection, delivering quality for your customers. Our fleyeVision 100% print inspection system guarantees perfect results, prevents costly customer rejections and delivers an impressive return on investment.

Designed and developed by A B Graphic, fleyeVision works seamlessly with our own finishing equipment, meaning accuracy and reliability are guaranteed.

Fast, accurate and fully automated, fleyeVision can be configured to meet your inspection requirements exactly. In addition to checking for scratches, hiccups and letter or text irregularities, it can detect register shifts or colour deviations.

### High-speed digital cameras

For accurate, real time identification of faults.

### Flexible

Inspection parameters can be fine tuned to meet your needs, then saved for future reference.

### Easy to use

Via intuitive touch screen control.

### LED illumination

Enables reflective surfaces, even reflex foils and holographs, to be checked.

### Versatile

Can be used on a printing press, converter, rewinder or pharmaceutical control machine.

# Converting

Delivering a competitive edge to your business, our conventional converting and sheeting equipment is everything you would expect from A B Graphic – well designed, expertly manufactured, reliable and capable of adding real value to your business.

## Converter Series 3

### Versatility

Ideal for a wide range of applications and materials.

### Unwinds

Available to handle 700mm, 1000mm and 1250mm diameter.

### UV, IR or hot air driers

Flexible curing options for all applications.

### Bulk waste rewinding

For quickly removing large areas of waste.

### Lamination

Under, over, de-lamination and re-lamination modules, as well as web turn bars.

## RTS sheeter

### Accurate

100% of errors are detected, corrected and reinspected.

### Easy-to-use

With intuitive, multilingual touchscreen control.

### Waste reducing

The RTS will stop automatically when the job is complete.

### Efficient operation

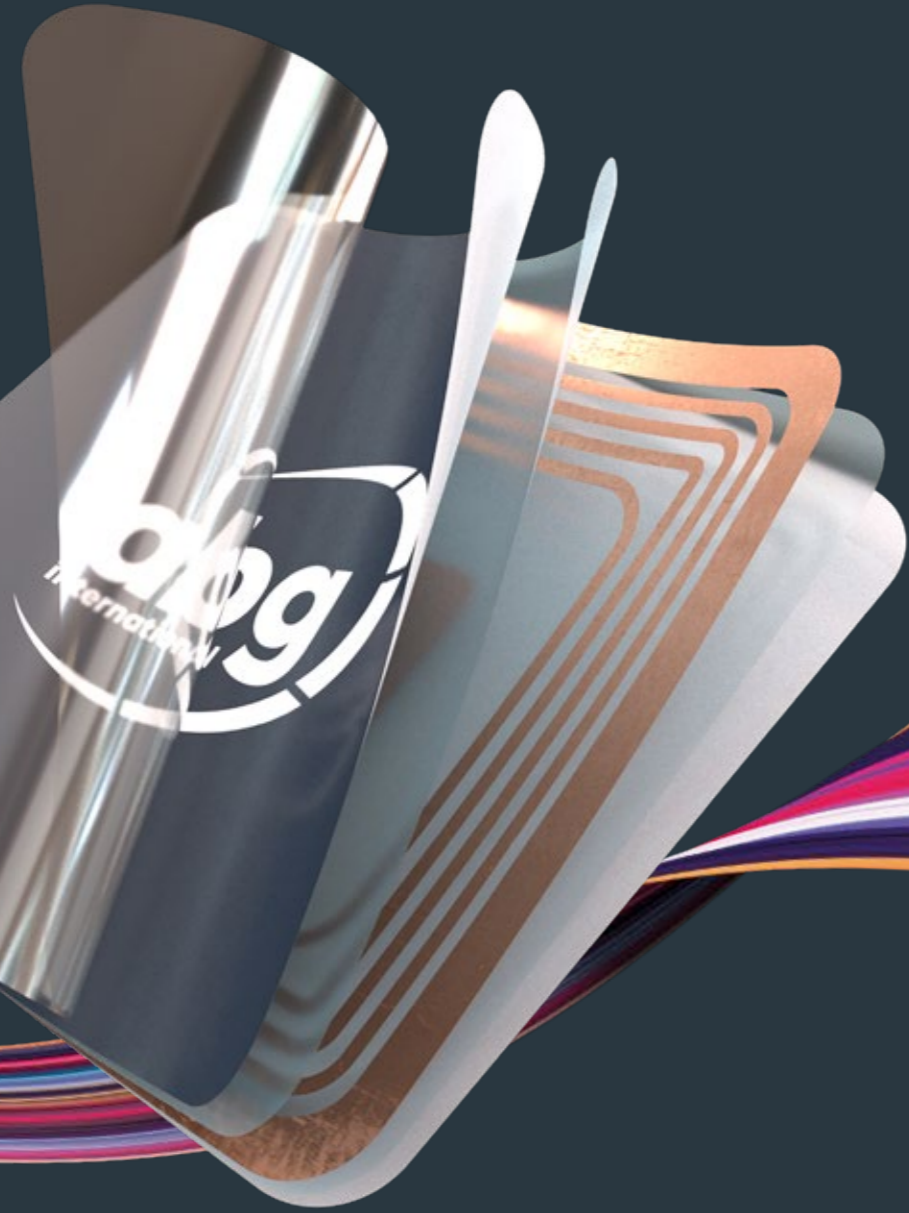
Automated control, speed control function and speed limitation.

### High-quality performance

High accuracy combined with missing mark sensor and label detection.



# RFID



No matter your output, we have smart solutions to cover your needs.

If you need a single lane machine, our Omega Ti200 RFID Tag Inserter meets your needs. However, if the output you need is larger, then we recommend a purpose-built Omega RFID Converting Line.

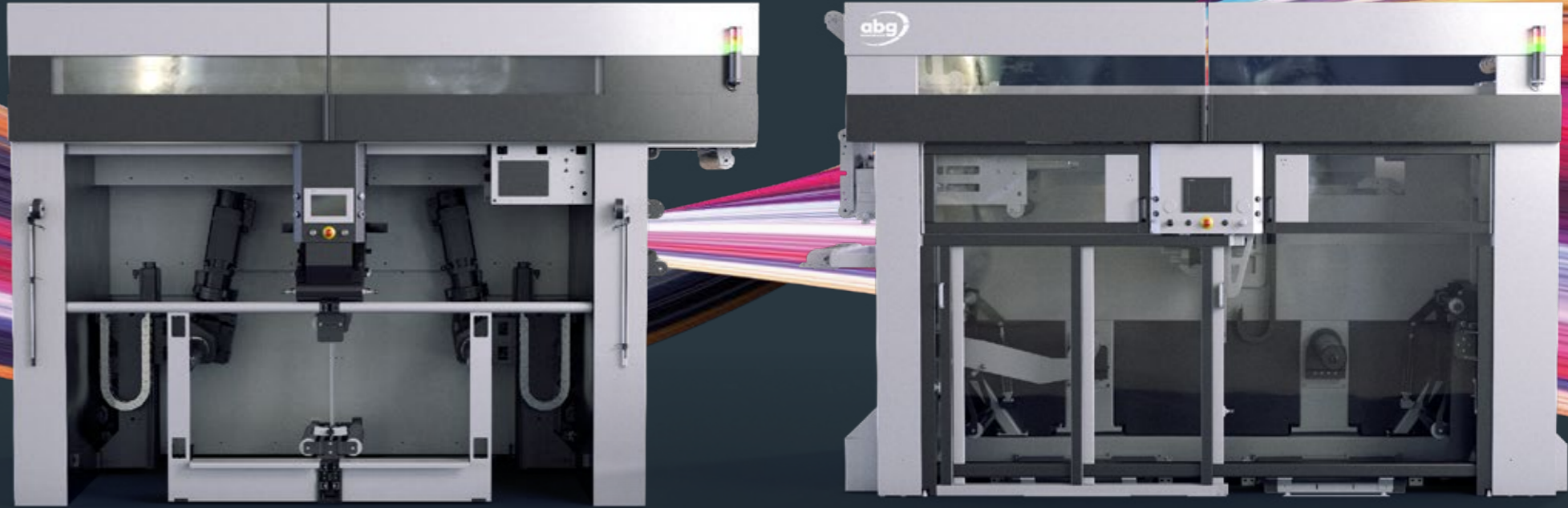
## Ti200 RFID Tag Inserter

The Ti200 is an entry level machine which takes rolls of finished, printed, die-cut labels and inserts security technology in a single pass. Its ease of use and low investment gives easy access to this exciting and rapidly expanding market. The Ti200 is capable of integrating RFID and EAS tags as well as other types of inserts or labels.

## RFID Converting Line

- Fast**  
1,000 label insertions per minute.
- Touch screen operation**  
Easy to use and intuitive.
- Anti-static technology**  
To limit dust attraction and reduce cleaning.
- Two web guides**  
Deliver excellent web control.
- Short web path**  
Improves efficiency, reduces waste.

# Non-stop winders



A B Graphic is now able to offer customers the ability to achieve non-stop print production with a series of non-stop unwinder and rewinder machines.

A B Graphic's market-leading technology is helping to deliver enhanced product quality all around the world. This combined with the improved productivity and reduced material waste means our Non-stop winders are the perfect partner for any label press.

- Increased capacity**  
Up to 20% additional capacity created – reducing the number of presses needed.
- Increased product quality**  
Increase product quality and consistency by running at a stable web tension.
- Environmentally efficient**  
Reduced material waste on machine start up and roll change.
- Camera compatible**  
A B Graphic's camera inspection technology is fully compatible with the NSU.



Scan here to see the NSU/NSR in action

# Turret rewinders

Our range of Vectra turret Rewinders is the most advanced in the world. Able to work in-line, or off-line as a stand-alone solution with a separate unwind module, Vectra Turret Rewinders enable you to finish your customers' jobs quickly, offer shorter lead times, and reduce your inventory to improve cash flow and cut waste.

Servo driven and with accurate tension control, they are smooth, reliable and capable of handling a wide range of substrates including delicate, perforated or punched products. Each model is available for three web widths: 330mm, 430mm and 530mm.





As the market leader,  
we have chosen ABG  
equipment for quality,  
speed and price

**Germano Riberio,**  
Administrator  
VOX, Spain



## Turret rewinder

### **Vectra** SGTR AutoSet

Over the last 20 years, we have pioneered the development of glueless turret rewinders and today, our Vectra SGTR remains unchallenged in the market place.

With fully automatic changeover, the new AutoSet Vectra SGTR saves hours of costly set up and changeover time. Simply enter the outside core diameter into the system's intuitive touchscreen, and all the mechanical positions will be precisely set up – ready for the next job.

#### **Easy-to-use**

Automatic set up and changeover features, mean that less training is required.

#### **Versatile**

Runs in-line with most printing presses or converters, or off-line with a stand alone unit.

#### **Flexible**

With no glue to consider, timing issues are reduced.



### **Vectra** ECTR

The ECTR is our entry level, 4 spindle turret rewriter, which is perfect for re-winding standard self-adhesive labels. It is also fully upgradable with a wide range of options, including automatic core loading, finished roll closure with print and apply label application, and our own fleyeVision 100% camera inspection system.

#### **Compact unwind**

For off-line operation, a space-saving 1000mm diameter, braked unwind unit is available, with an integral roll lift, electronic web guide, adjustable splice table with clamps and auto-lift scissor slitting unit, complete with five sets of rotary knives.

#### **Automatic core loading**

Enables cores to be positioned automatically onto the rewind shaft, supplied with a storage tower or automatic bowl feeder.

#### **Omega/Vectra interface**

Run an Omega converting line and a turret rewriter simultaneously, with a one handset.

#### **Nordson hot melt gluing**

A programmable system which allows the operator to set up the core gluing in seconds.

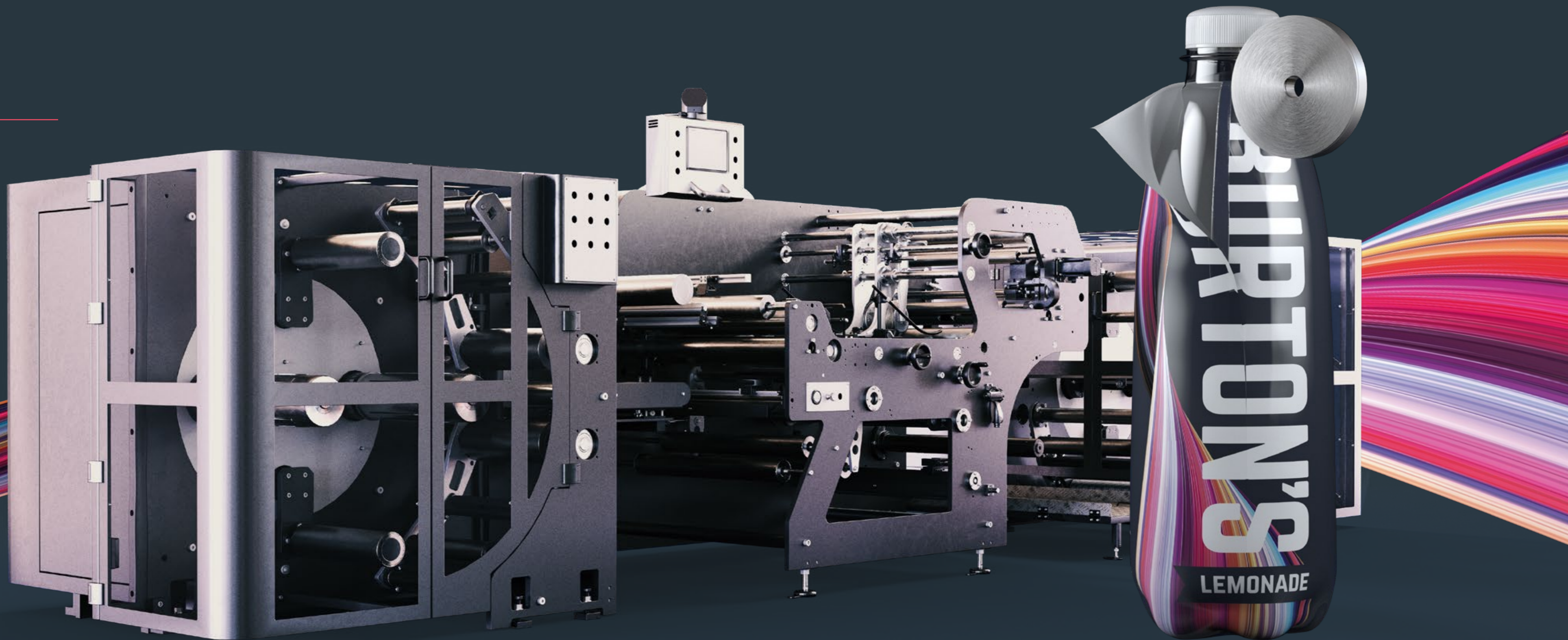
### **Vectra** HDTR

The HDTR is a 4 spindle turret rewriter, specifically designed to rewind large diameter rolls and heavy duty substrates. Capable of rewinding finished rolls of up to 500mm in diameter, it can run in-line with a range of roll-to-roll printing presses, without any mechanical or electrical interfacing.



# Shrink Sleeve

Our complete range of narrow machines is manufactured for the label finishing industry. Our modular system adapts to the customer's needs. It also innovates the production process of sleeve labels with a full range of products to form and seam the sleeve.





## Shrink Sleeve

### Shrink Sleeve Seaming

The shrink sleeve seaming machine converts a plastic sheet into a single sleeve label or multiple sleeves for promotional packages. The type of welding is by our proprietary chemical solvent, GraFix. This label, once placed on the final product, conforms to the shape of the container.

#### Shrink Sleeve TSR

Turret seaming rewinder (TSR) machine. Unwinding, longitudinal pre-cutting, width control, UV control, and single or double seaming turret rewinding.

#### Shrink Sleeve TSR2

Double turret seaming rewinder (TSR2) machine. Turret unwinding, longitudinal pre-cutting, width control, UV control, and single or double seaming turret rewinding.



### Shrink Sleeve Doctoring

The shrink sleeve doctoring and rewinder machine (DR) is designed to control, detect and sanitise any defects. It also has an alignment system and a splicing table for correcting defects.

#### Shrink Sleeve DR

Bidirectional sleeve doctoring and rewinding machine.

#### Processes and technology

Bidirectional unwind and rewind, air balloon inspection, space reserved for inline inspection and splicing table.

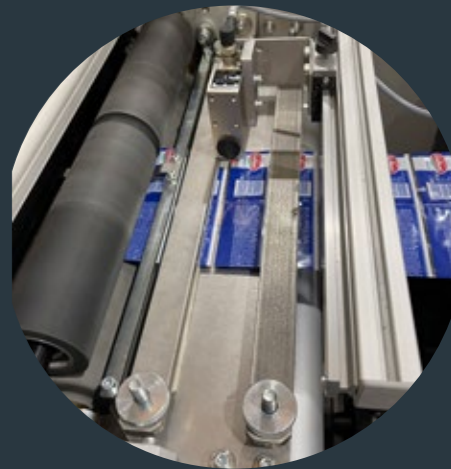
### Shrink Sleeve Cutting

We pride ourselves on innovation in the production of sleeve labels. Our range of cutting machines converts shrink sleeve reels into single sleeves or finish in reel.

In our portfolio, we have a versatile cutting and stack cutter, which can be used to cut shrink sleeves, IML labels, and flexible packaging in a single machine.

#### Shrink sleeve IC

Intermittent cutting (IC) machine for sleeve. Unwinding, transversal cutting for formats, transversal pre-cutting for formats or reels and rewinding.



Born and bred in Yorkshire, back in 1954, we are a business built on relationships, reliability and trust.



We approached ABG with a production problem. They came back to us with an alternative solution which was faster, cheaper and would significantly increase our production capacity. During the machine acceptance trial, they introduced more automation, again increasing our capacity further. The best thing about this was it wasn't asked for, or expected. ABC not only equalled our requirement but exceeded all expectations.

**Dudley Cherry & Stephen Baverstock**  
Joint Managing Directors,  
Traderplus Pty Ltd, South Africa



We understand the enormity of your investment and the critical part it plays in your business, not only on day one, but throughout its lifetime.



When super 'Storm Sandy' devastated my business back in October 2012, the future looked uncertain. Not only did ABG provide us with spare equipment to borrow when our existing stock was destroyed, but they offered unparalleled assistance through the rebuilding process. It is thanks to the unwavering support from ABG during these trying times that we were able to pull through and keep our doors open. If you are looking for a vendor you can count on, there is no one that we'd recommend more than ABC.

**Neil Sidrane, CEO,**  
K. Sidrane Inc, USA



This is the cornerstone of the service that we now offer our customers around the globe, supported by our guarantee

"ABG is not happy until you are"  
- a service promise that lasts well beyond the initial sale.



**Dedicated advisors**

Our friendly team of technical advisors are available to help between the hours of 06:00-22:00 (GMT).



**Rapid response time**

Our dedicated team is available when you need them, ready to use their years of experience and expertise to help you and your business.



**Worldwide service engineer coverage**

A global network of over 40 service engineers across Europe, North America and Latin America. Our customers also have access to our 15 global technical advisors.



**Supported by technology**

State-of-the-art mixed reality assistance and training to support you and your team, no matter your location.



You depend on us to get it right. This means your reputation is in our hands.

Choosing A B Graphic means you can rest easy in the knowledge that:



**Our after-sales service**

We have a global team of over 100 personnel.



**High quality components**

All our components are manufactured in-house at A B Graphic by our dedicated experts applying our own high-quality control processes.



**Parts availability**

A B Graphic stock 100,000 individual parts, plus a list of the most commonly purchased items which are always guaranteed to be in stock.



**Rapid response**

We have a general 24-hour response call out time, with the added possibility of sending a specialist from the manufacturing site within 48 hours, depending on the issue.



# Enjoy the security of A B Graphic

---



65+ years of print finishing expertise.



Designed, manufactured, and serviced by A B Graphic.



Built with connectivity, automation, and ease of use.



Modular approach which means each build can be bespoke to you.



Retrofittable options – allowing you to future proof your business.

## Head Office

Lancaster Road, Carnaby Industrial Estate, Bridlington, YO15 3QY, UK

Contact us: +44 1262 671 138 | [info@abgint.com](mailto:info@abgint.com)

[abgint.com](https://abgint.com)